



**LORENZ**  
MARINE ELECTRONICS

# MAGNUM Pro HD

**HD**

**MAGNUM Pro HD chartplotter + multi-function controller** is the perfect mate for the professional fishermen or for high-tech dashboard lovers. Control on any HDMI display:

- **Chartplotter**
- **Fish finder\***
- **Any connected NMEA0183 and NMEA2000 compatible device\*** such as AIS, autopilot, engine, etc.

## Tough and reliable

The **back-lit keyboard** is easy to use even with gloves and in any condition. The optional remote control gives an extra hand, for example to quickly save marks during your activity.

## HDMI Video output

MAGNUM Pro HD is compatible with any HDMI display to provide an HD resolution experience!

## NMEA0183 & NMEA2000

MAGNUM Pro HD is extremely versatile as it comes with two NMEA0183 serial ports and one NMEA2000 port to connect any compatible device such as AIS, autopilot, engine, etc.

## Configure your desired view

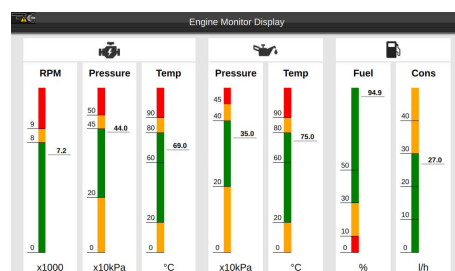
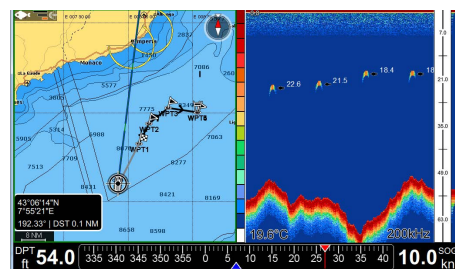
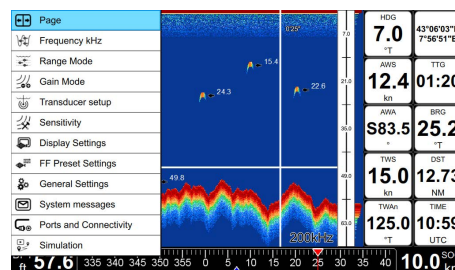
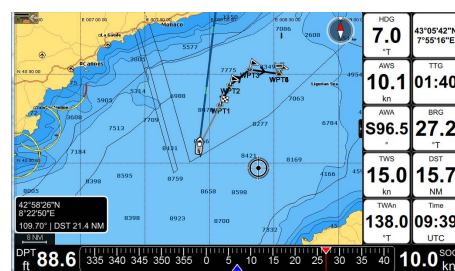
Beside choosing any display size, you can also configure the multi-vision layout with fish finder, map and data boxes: full page or split page, with no data, one or two rows of data.

## PCustomize the function keys

With MAGNUM Pro HD, you can configure the four functional keys with your desired function shortcuts, for the top used commands.

## Never miss a thing

Browse the Fish Finder history up to 5 minutes (when connected to a fish finder) and, if you find anything interesting, place a mark on it! With the Cursor Box smart function, point the cursor on map to instantly view distance and bearing.



\* Not included



## TECHNICAL SPECIFICATIONS

- Dimension: 172,5 x 106,5 x 84,4 mm (6.8" x 4.2" x 3.3") with holder
- Weight: 350 g
- Compatible with any HDMI display
- Power Consumption: 1,2 W typical
- Supply Voltage: 10-35 Vdc
- Cartridge Slot: 1x micro SD Card (Not Included)
- Back-lit keyboard
- Integrated remote control receiver (radio IF 2.4 Ghz)
- Waterproof IPx6
- Storage temperature: -20 +80 °C / Operating temperature: -20 +60°C
- Connectors:
  - 1x Supply and data cable: 2 NMEA 0183 ports + external alarm
  - 1x NMEA2000
  - 1x GPS: 6 pins (powered 10-35 Vdc)
  - 1x Built-in HDMI video input cable

## SOFTWARE FEATURES

- **Resolution: HD ready**
- **4 fully configurable functional keys**
- **Multi-vision configurable layout** with fish finder, map and data boxes
- Full Menu on Mappa and Fish Finder
- Navigation functions: Go To, Add Waypoints, Marks, MOB, Easy routing
- Tracks recording and management
- Customizable data boxes
- **Cursor Box** showing distance and bearing of cursor location
- Customizable ship profile
- Simulation Mode
- Grounding Alarm
- AIS Compatible
- Lorenz BB Fish Finder compatible
- **Fish finder history** up to 5 minutes (when connected to a fish finder)
- **Engine control page** (when connected to an engine)

## CONTENTS OF THE BOX

- MAGNUM Pro HD with built-in HDMI cable integrato
- Metal mount with screws
- Power supply and data cable

## ACCESSORIES



Lorenz RCHD  
Remote Control



Fish Finder  
Lorenz  
FishPro HD



Lorenz  
GPS Receiver



### WorldWide Distributor:

Faser s.r.l.  
Via Maestri del Lavoro d'Italia, 8  
17019 Varazze (SV) Italy  
P. IVA 01252330095

[info@lorenzmarine.com](mailto:info@lorenzmarine.com)